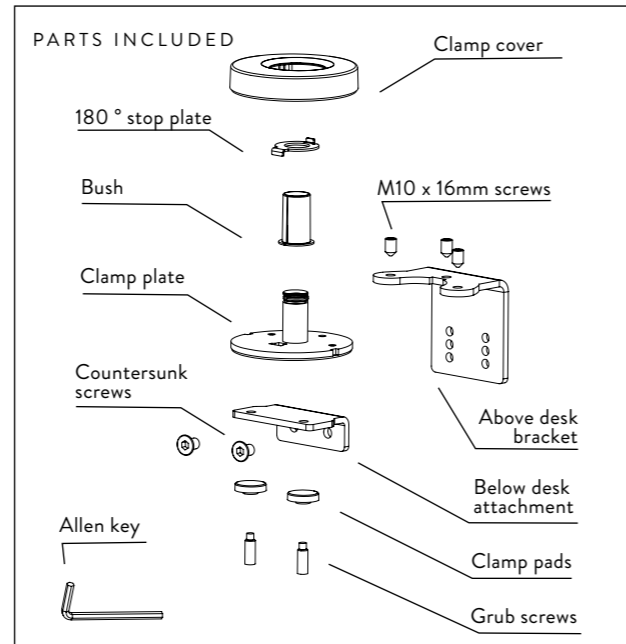
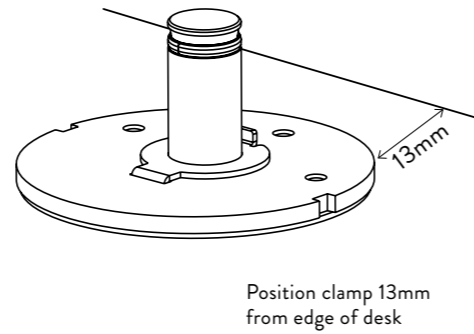


**FLO PLUS SPLIT MOUNT CLAMP**

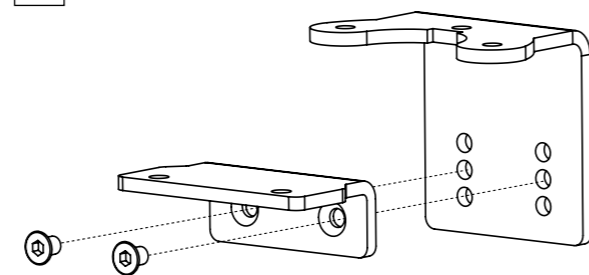
DYN-026-A35-INST-A-SEP 2015



**1 POSITION CLAMP PLATE ONTO WORK SURFACE**



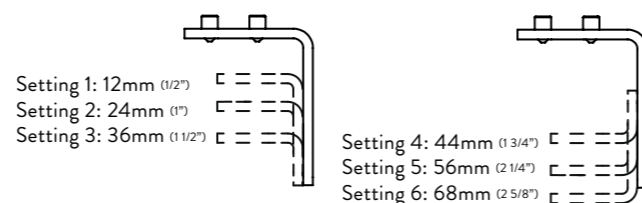
**2 CONFIGURE CLAMP BRACKET**



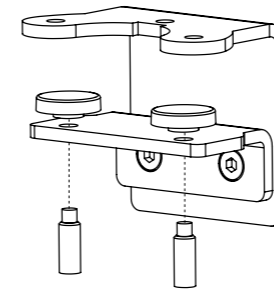
If required change the clamp plate setting by removing Countersunk screws and adjusting to correct setting

**Regular maximum desk thicknesses**

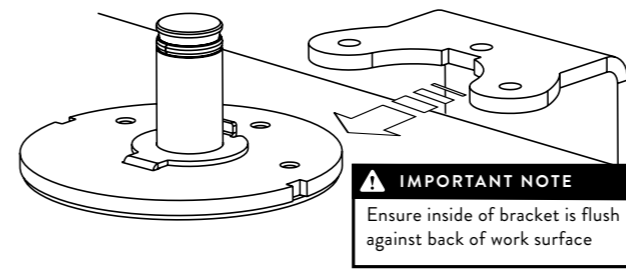
**Inverted maximum desk thicknesses**



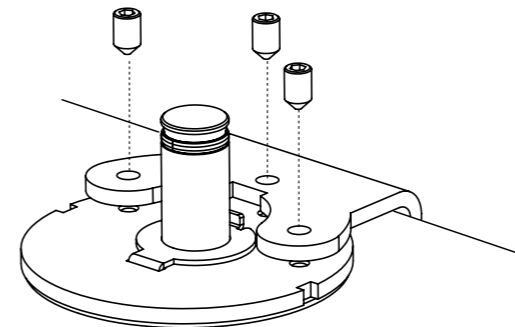
**3 INSTALL GRUB SCREWS AND CLAMP PADS**



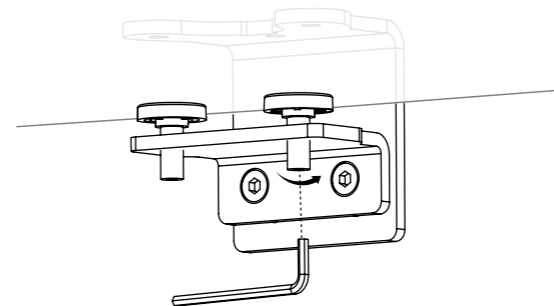
**4 FIT CLAMP BRACKET**



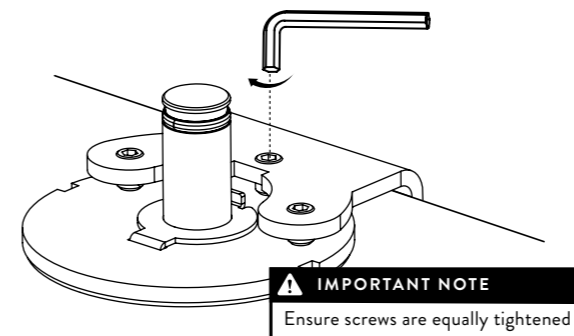
**5 FIT M10 x 16 SCREWS**



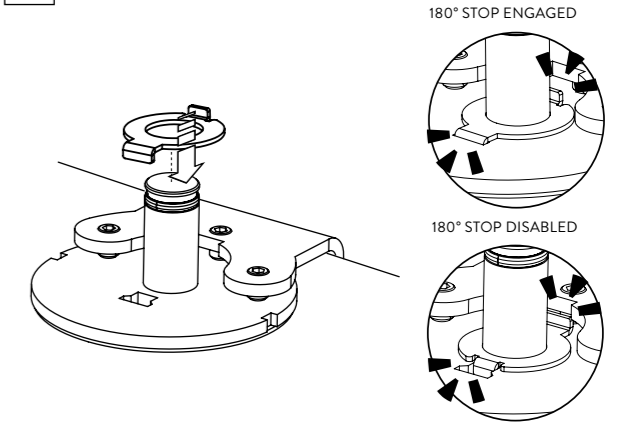
**6 TIGHTEN GRUB SCREWS INTO POSITION**



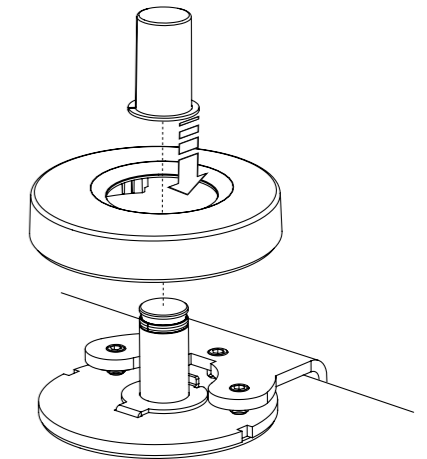
**7 FULLY TIGHTEN UPPER SCREWS**



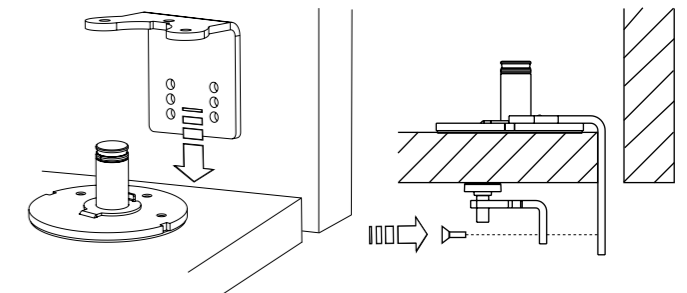
**8 CONFIGURE 180° STOP COMPONENT**



**9 FIT CLAMP COVER AND BUSH**



**ALTERNATIVE INSTALLATION METHOD FOR RESTRICTED GAP AT REAR OF WORK SURFACE**



**WARNING**

- Do not use this product for any purpose other than that for which it was designed
- Ensure desk/work surface is suitable to take the weight of the arm/s and monitors
- Supported weight must not exceed the maximum load per arm
- Take care when installing as fingers could become trapped

**MAINTENANCE AND INSPECTION**

- Ensure all screws and fixings are fully tightened and occasionally re-tighten if necessary.
- Clean with a damp cloth. DO NOT use solvents.

**DISCLAIMERS**

- The use of power tools, lever bars or excessive force during the installation, or re-configuration of the product will invalidate your guarantee
- Failure to observe the recommendations in the use, and configuration of these products may affect your guarantee